



## **Workplace Conference: A Different , Disabled or Difficult worker?**

### **Do you have challenging colleagues or customers?**

- Does a colleague persistently cut across you in meetings to make 'only one important point' – and then ramble off at a tangent?
- Has your boss read all the books but is still disorganised and can't prioritize or delegate?
- Got a team member who has great ideas but seems to find it impossible to follow instructions and delivers just in time, if then?
- Found customers who don't seem capable of filling out a simple form or explaining clearly what the problem is?

### **Have you considered whether they might have a 'hidden' Specific Processing and Learning Difference (SPLD)?**

---

**The DANDA WORKPLACE Conference on 21st APRIL 2010 will give you another perspective on these behaviours in the workplace and how to manage them; and will help you to meet your obligations under equality legislation.**

## A Different, Disabled or Difficult worker?

*Managing neuro-diversity in the workplace the 'hidden' neuro-developmental conditions of Dyspraxia, Attention Deficit (Hyperactivity) Disorder, Dyslexia, Asperger's Syndrome and others*

---

### Why should I attend?

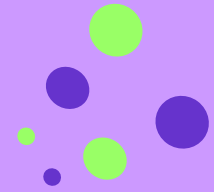
Many employers and service providers do not realise just how many of the people they deal with in the workplace - both colleagues and customers - may have Specific Processing and Learning Differences or are 'Neuro-diverse' (ND). NDs constitute a significant number of the population and because of the 'hidden' nature of their differences they can in equal measure, perplex, delight and challenge their employers and colleagues in the workplace.

Many ND people themselves are unaware of the underlying reasons for their behaviour, frustrations and lack of progress at work.

### This conference has a practical focus and will enable you to

- understand what Neuro-diversity is
- appreciate the impact on individuals of conditions such as Dyspraxia, Attention Deficit (Hyperactivity) Disorder, Dyslexia and Asperger's Syndrome
- understand how these conditions can manifest in the workplace
- develop strategies for managing ND differences and talents to best effect whatever the role or level of work experience
- develop workplace policies and practices that accommodate NDs at all levels of the organisation
- apply similar strategies to customer service training and delivery
- help meet your obligations under equality legislation including accessibility

## Speakers



### Keynote address from Jo Todd of Key4Learning

Jo offers expert insights and practical advice on managing neuro-diversity in the workplace. Her successful 'whole organisation approach' has been tailored to meet the varied needs of clients both overseas and in the UK including large commercial organisations, Government Departments such as the Cabinet Office, Public Services, Education and small businesses.

### ***other speakers will include representatives from***

Human Resources

Equality & Human Rights Commission

ACAS

Trades Union

*and individuals with personal experience of these conditions*

## Who should attend?

- Line managers
- HR professionals
- Equality & Diversity specialists
- Training & Development professionals
- Occupational Health & Safety practitioners
- Occupational Therapists
- Occupational Psychologists
- Disability Employment Advisers /Job Centre Advisers
- Careers advisers including those based in universities & FE
- Work Placement Advisers
- private and public sector service providers
- union representatives

***and anyone with an interest in Neuro-Diversity  
including ND people themselves***



**danda**

**Developmental Adult  
Neuro-Diversity Association**

Run by and for people with conditions such as Dyspraxia, Attention Deficit [Hyperactivity] Disorder, Asperger's Syndrome and Dyslexia

**Workplace Conference:  
A Different, Disabled or Difficult worker?  
Wednesday 21st April 2010**

**Venue**

J Sainsbury plc  
33 Holborn  
London EC1N 2HT  
(nearest underground Chancery Lane)

**Sainsbury's has kindly donated the use of their auditorium to DANDA for this event.**



**Conference Fee**

£95.00

£75.00 for **DANDA** members and Associate Members

---

**To book contact [info@danda.org.uk](mailto:info@danda.org.uk)  
or telephone 0207 435 7891  
or download from our website  
[www.danda.org.uk/conferences](http://www.danda.org.uk/conferences)**